

# TWITTER

## TWITTER

Twitter is a free social networking and micro-blogging service that allows its users to send and read other users' updates.

Twitter uses SMS Protocol to deliver short messages (140 characters or less). These messages are managed through your Twitter account; however, you can access them through your phone or other Twitter applications. The messages are sent to your friends/network (followers) instantly.

## CREATING A TWITTER ACCOUNT

Step 1: Go to <http://www.twitter.com>

Step 2: Click on **Get Started--Join**

**Get Started—Join!**

Step 3: Fill in information in the following information:

- \* Full Name
- \* Username (Will check availability)
- \* Password (Must be at least 6 characters)
- \* Email
- \* Type letters
- \* Click on **Create my account**

Step 4: **Skip** the next step of entering Email Password

Step 5: **Uncheck Select All** (otherwise you will be following the people that are listed)

### Join the Conversation

Already use Twitter on your phone? [Finish signup now.](#)

Already on Twitter? [Sign in](#)

Full name  ⇒ enter your first and last name

Username

Your URL: <http://twitter.com/USERNAME>

Password

Email

☐ I want the inside scoop—please send me email updates!

Type the words above

besting 1 1

Can't read this?  
[Get two new words](#)  
[Listen to the words](#)  
Powered by reCAPTCHA  
[Help](#)

**Create my account**

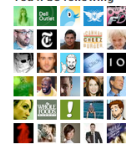


Maybe you've heard of these Twitter users? Select the people you'd like to start following.

☒ Select All

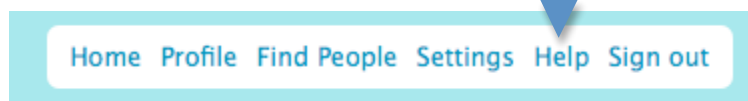
<input checked="" type="checkbox"/>		<b>Alison</b> hi there, i'm all. i'm in a band called a fine frenzy. life is funny. let's have a laugh.
<input checked="" type="checkbox"/>		<b>Dell Outlet</b> Refurbished Dell™ computers, electronics. Question/comment? Contact Stefanie Nelson at @StefanieAtDell. More Dell Twitter accounts at <a href="http://www.Dell.com/Twitter">www.Dell.com/Twitter</a>
<input checked="" type="checkbox"/>		<b>Twitter</b> Always wondering what everyone's doing.

### You'll be following




and 178 more.

- Step 6: Click on Follow  
 Step 7: Click on Settings



- Step 8: Fill in your **account** information and Press Save

 **Colette**

Account Password Devices Notices Picture Design

Name:   
 Enter your real name, so people you know can recognize you.

Username:  Your URL: <http://twitter.com/cairnsco>  
 No spaces, please.

Email:

Time Zone:

More Info URL:   
 Have a homepage or a blog? Put the address here.  
[\(You can also add Twitter to your site here\)](#)

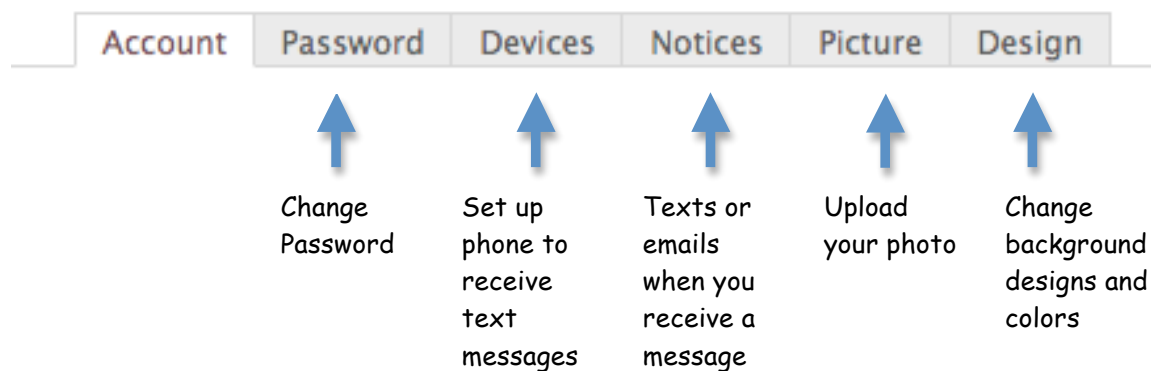
One Line Bio:   
 About yourself in fewer than 160 chars.

Location:   
 Where in the world are you?

Language:   
 What language would you like to Twitter in?

☒ Protect my updates  
 Your updates are currently protected; only those you approve will receive your updates. You will not appear on the [public timeline](#).

- Step 9: Edit Settings of your choice



## FOLLOWING USERS ON TWITTER

If you follow someone on Twitter, you will see the users updates.  
 To follow someone on Twitter, you can usually use the Search feature;  
 however it can take a long time before a username appears in the database.  
 To get around this issue, go to the person's twitter page to follow them. For  
 example: <http://twitter.com/cairnsco>  
 Click on Follow!

## FOLLOWERS

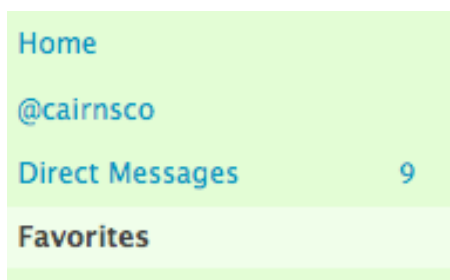
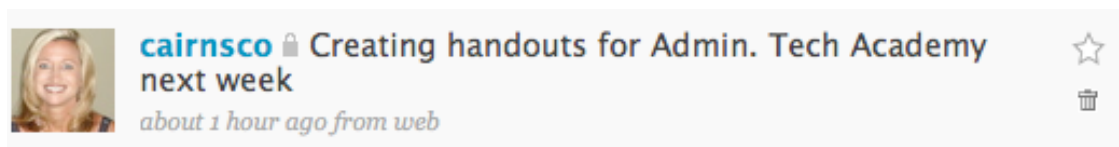
Those who follow you will see your updates. You can set your updates to  
 private so that only Twitter users you approve can see your updates. (The  
 setting by default is Public)

## SENDING UPDATES

You can send an update from the any internet browser, your cell phone, or  
 any third party application (Tweetie, Tweetdeck, etc.).

## MARKING TWEETS AS FAVORITES

At the end of a post you will see a Star. If you click on the star, it will mark  
 your post as a favorite (and turn yellow) so you can refer back to the post  
 easily.



## DELETING TWEETS

Click on the "trash" can and this will eliminate your post. You cannot edit a post!

## TWITTER COMMANDS

<b>@Username</b>	Replies to a particular user
<b>D Username</b>	Sends a Direct Message to someone
<b>RT Username</b>	Send message out again—Not everyone has same followers so if there is a really good post that you think should be resent...RETWEET
<b>#</b>	Putting this number symbol with a word or several words without spaces tags posts
<b>#followfriday</b>	Tags people you think should be followed
<b>WHOIS Username</b>	Gives you profile information of user and when they joined Twitter
<b>GET Username</b>	Shows you last post from user
<b>FAV Username</b>	Marks last post by user as a favorite

## OTHER FAVORITES:

Polls	<a href="http://twitter.polldaddy.com/">http://twitter.polldaddy.com/</a>
Shrink Tweets	<a href="http://140it.com/">http://140it.com/</a>
Search for Tags	<a href="http://www.tweetag.com">http://www.tweetag.com</a>
Share Photos	<a href="http://twitpic.com">http://twitpic.com</a>
Who are friends/followers	<a href="http://friendorfollow.com">http://friendorfollow.com</a>
Teacher Group	<a href="http://twittgroups.com/group/teachers">http://twittgroups.com/group/teachers</a>
List of Twitter Users by Subject	<a href="http://twitter4teachers.pbworks.com/">http://twitter4teachers.pbworks.com/</a>

## Other 3<sup>rd</sup> Party Applications:

\* Other applications that can be used to view tweets!

Tweetie: <http://www.tweetie.com>

TweetDeck: <http://tweetdeck.com/beta/>

